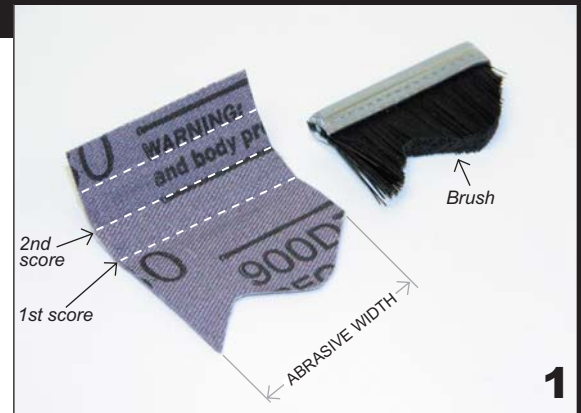


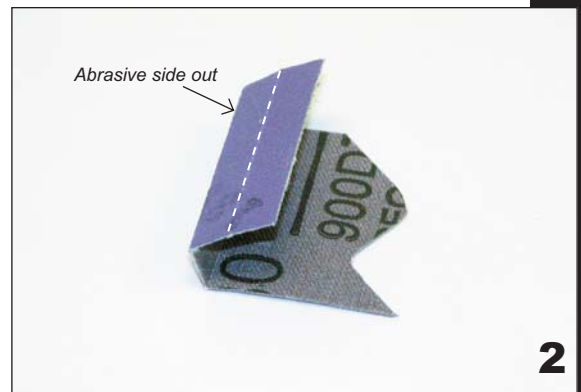
TurboFlex Pro

LOADING INSTRUCTIONS

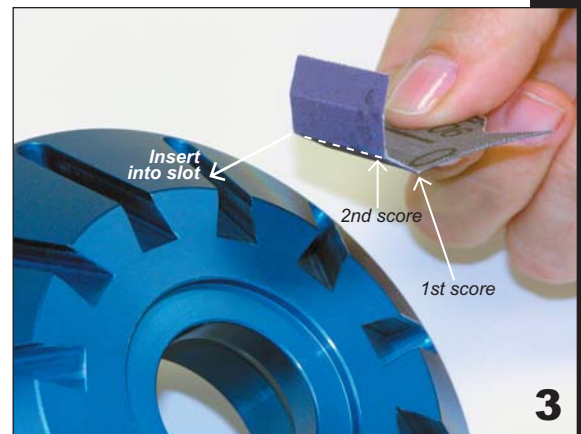
1) SELECT abrasive width (1.5, 2.0 in.) to match slot length in head.



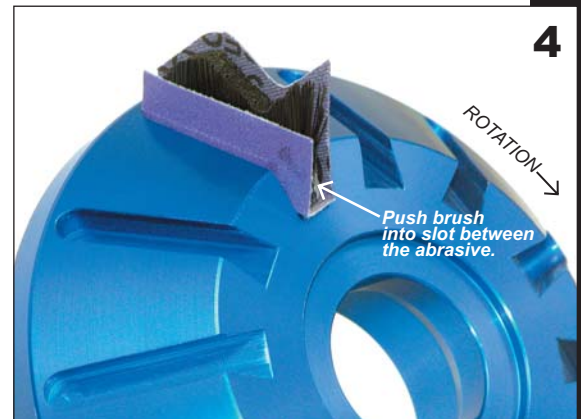
2) FOLD selected abrasive at 1st and 2nd score line with abrasive side out.



3) INSERT 2nd score line into slot in head to bottom of slot. Push 1st score line to bottom of slot.



4) PUSH brush into slot between folds in abrasive. Note direction of rotation.



Fill remaining slots per above instructions. Install Center/End Cap. Install on spindle. Start with 700 RPM to 1200 RPM Max.